



**Learn anytime, anywhere...  
with Arizona PBS & Sesame Street in Communities!**  
**Available October 2019!**



**No cost Learning Opportunities for Clock Hour Certificates  
available in the  
Arizona Early Childhood Workforce & Professional Development Registry**


In conjunction with Sesame Street in Communities, Arizona PBS provides interactive courses and several online webinars created for early childhood educators—whether you are working in a classroom, center-based program, or family child-care setting through the Arizona Workforce Registry. **These are entirely FREE and easy as 1-2-3!** All of the courses are self-paced—you can start, stop, and begin again as your schedule allows.

**Each interactive course or webinar will satisfy DHS Child Care Licensing and Quality First requirements for professional development training hours.**

The interactive courses and webinars contain videos, activities, and resources you can use with children and families. All professional development aligns with one of the Arizona Early Childhood Workforce Knowledge and Competencies. You will gain valuable knowledge and develop strategies for working with families.

Below is a link to a 6-minute webinar that will show you exactly HOW to register for the Sesame Street in Communities courses through the Arizona Early Childhood Workforce Registry. This is a 2-step process. Please take the time to view it. We hope you will get started today!

<http://links.asu.edu/sesame2020>

Interactive Courses			
<p><b>Building a Reader</b> 4 Clock Hours</p> 	<p>An interactive course that explores key literacy goals, strategies, and activities to support learning around language and literacy in children ages 2-5.</p>	<p><b>Make Believe with Math</b> 5 Clock Hours</p> 	<p>An interactive course that explores the importance of math and pretend play in early childhood (ages 0-5).</p>
<p><b>Growing Together</b> 3.5 Clock Hours</p> 	<p>Explore strategies in every developmental domain to work with families in making every student school ready.</p>	<p><b>Note:</b> These courses are occasionally closed. Please check availability first. <b>Note:</b> For an optimal course experience, we recommend using the latest versions of Google Chrome or Safari on a PC.</p>	



# No cost Early Childhood Professional Development

Enroll: [www.azearlychildhood.org](http://www.azearlychildhood.org)



## Webinars: Receive 1 credit hour for each one completed



### Health, Safety and Nutrition

More Than Strong Smiles  
 Handling Emergencies  
 Managing Asthma  
 Traumatic Experiences - Part 1  
 Traumatic Experiences - Part 2  
 Understanding Bullying



### Family & Community Partnerships

Caring for Kids or Cuidar de los niños  
 Exploring Family Engagement  
 Empowering Families  
 A Day in the Life  
 Traumatic Experiences - Office Hour  
 Helping Kids Grieve  
 Hand in Hand  
 Foster Care



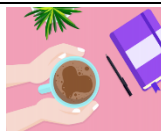
### Curriculum & Learning Environments

Move and Learn Together for STEM  
 Caring for Mixed Ages  
 Map Your Space  
 Guided Play  
 Move and Learn Together: Movement for Literacy



### Child Growth & Development

Bright Financial Futures  
 Move and Learn Together: Movement for Healthy Bodies  
 Milestones: How Children Grow  
 Language  
 Sesame Street and Autism: Resources You Can Use



### Professionalism

Taking Care of Myself



### To receive credit through the Arizona Early Childhood Workforce Registry,

email the certificates of completion to the instructor

[Kathryn.evans333@gmail.com](mailto:Kathryn.evans333@gmail.com)

### Webinars Coming Soon...

(REMEMBER to continuously check the Registry for NEW webinars)

- Welcome to SSCI 2.0
- Phonics
- Parental Addiction
- Everyday Brain Builders
- Expressive Art
- Celebrating & Supporting Fatherhood
- Sleep
- Safety
- Gun Violence
- Financial Insecurity

### Questions?

Contact the Registry Admin Home Help Line at

1 (855) 818-6613 or [info@thearizonaregistry.org](mailto:info@thearizonaregistry.org)

Sesame Street in Communities website:

[www.sesamestreetincommunities.org](http://www.sesamestreetincommunities.org)

Arizona PBS - Education Outreach, 555 N. Central Ave, Suite 500,  
 Phoenix, AZ 85004